

CABLE ASSEMBLY INSTRUCTION

Maple Model(s)

HMI5000 Series (COM1)
HMI600 Series (COM1)

PLC or Controller

GE Intelligent Platforms
90-30 Series CMM311

Communication Type

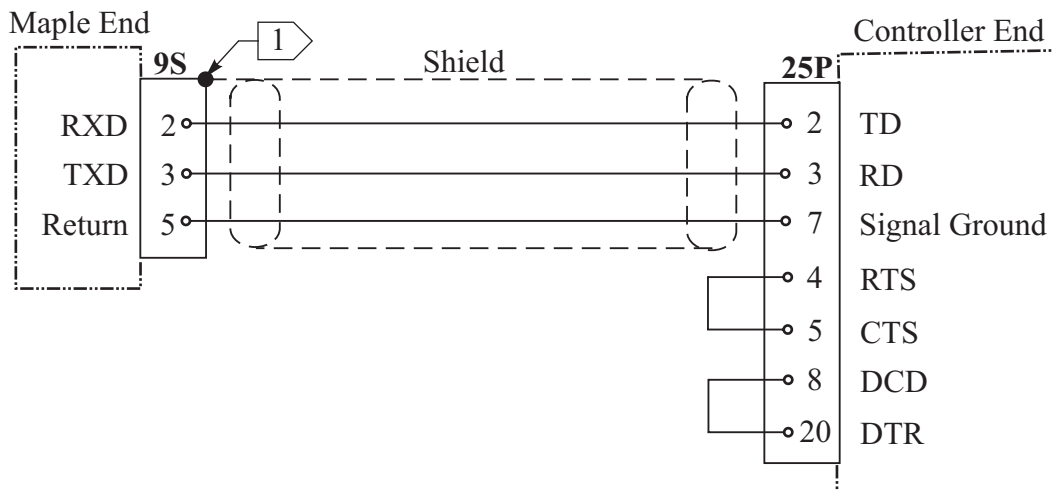
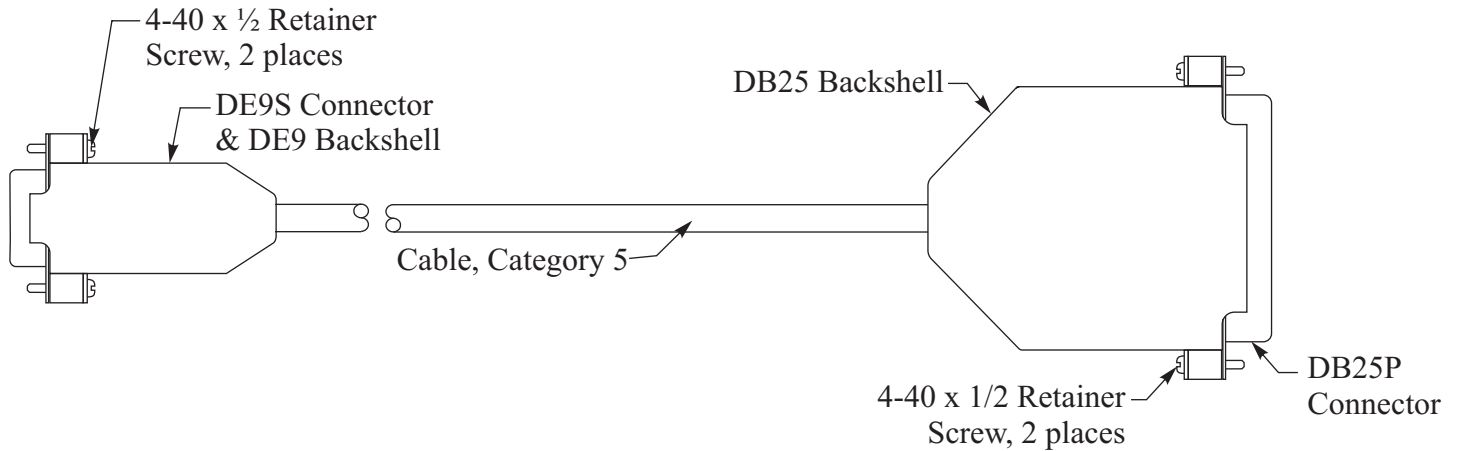
RS-232 with DB25
Connector at Controller



Summary

Use the wiring diagram and illustration to assemble a communication cable for use with a GE Intelligent Platforms 90-30 Series PLC (CMM311 Port 1 direct connection or Port 1 or Port 2 using the GE “Wye” Connector).

Drawing and Schematic



Notes

1 Shield wire must terminate to the connector metal shell.